

Water is Life

Access to safe drinking water and adequate sanitation are global issues. Billions of people around the world suffer every day because they lack access to these resources. The impact is heartbreaking: Illnesses from water-related diseases account for millions of childhood deaths and loss of school days each year.

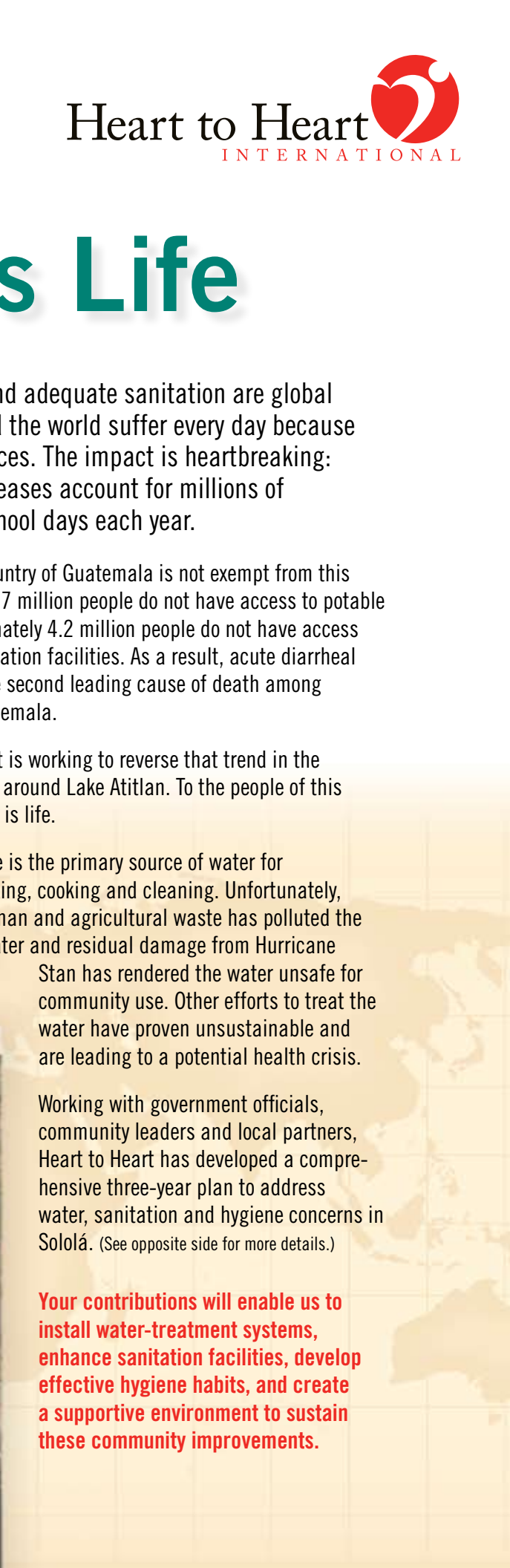
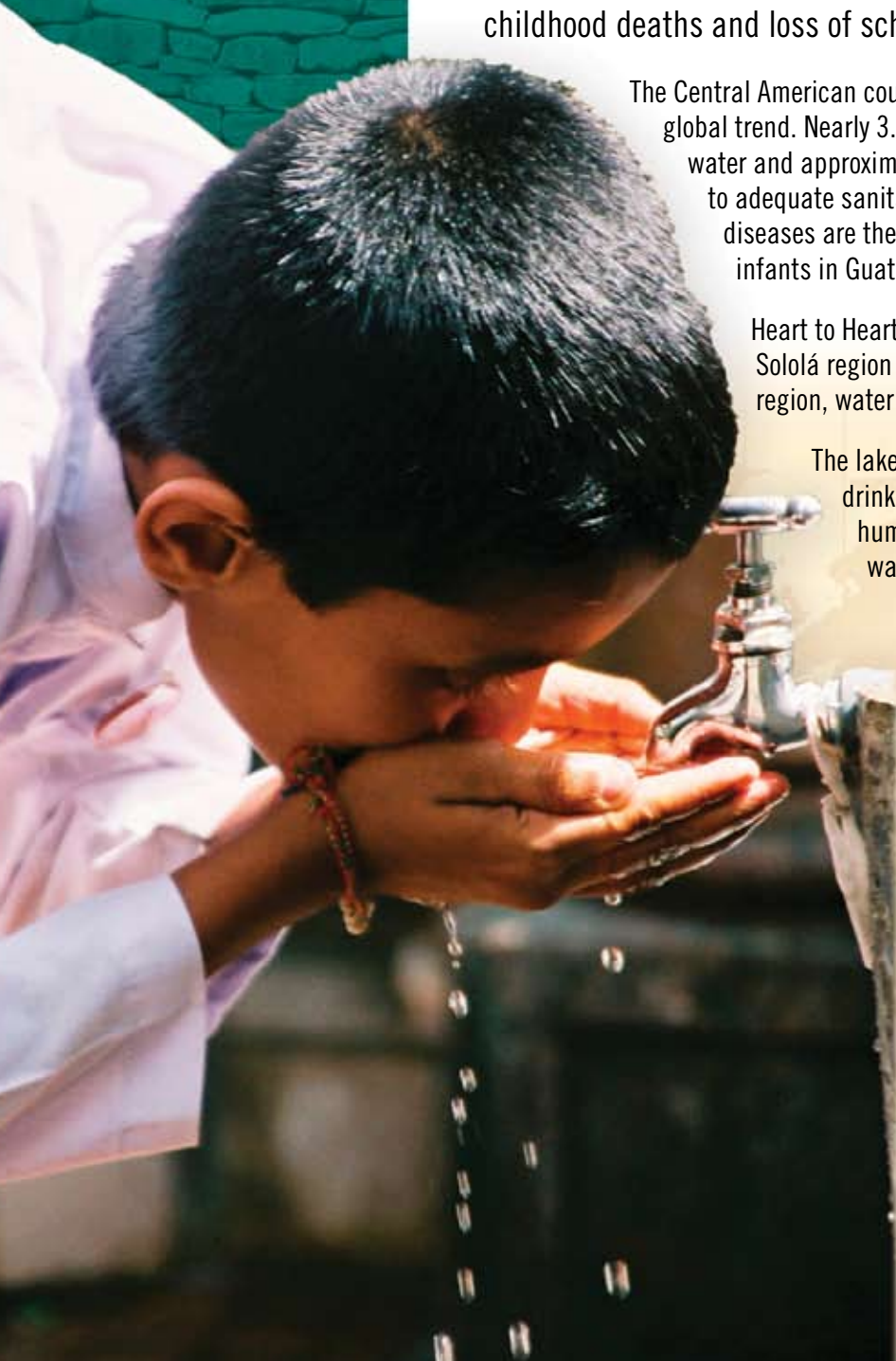
The Central American country of Guatemala is not exempt from this global trend. Nearly 3.7 million people do not have access to potable water and approximately 4.2 million people do not have access to adequate sanitation facilities. As a result, acute diarrheal diseases are the second leading cause of death among infants in Guatemala.

Heart to Heart is working to reverse that trend in the Sololá region around Lake Atitlan. To the people of this region, water is life.

The lake is the primary source of water for drinking, cooking and cleaning. Unfortunately, human and agricultural waste has polluted the water and residual damage from Hurricane Stan has rendered the water unsafe for community use. Other efforts to treat the water have proven unsustainable and are leading to a potential health crisis.

Working with government officials, community leaders and local partners, Heart to Heart has developed a comprehensive three-year plan to address water, sanitation and hygiene concerns in Sololá. (See opposite side for more details.)

Your contributions will enable us to install water-treatment systems, enhance sanitation facilities, develop effective hygiene habits, and create a supportive environment to sustain these community improvements.



Water is Life



Water and Sanitation Interventions

Working with our humanitarian partners at International Aid, we will provide HydrAid™ water-treatment systems initially to several schools throughout Sololá, then to the families of schoolchildren within the scope of the program, and finally to the communities surrounding each school over a three-year period. We will repair and install sanitation facilities using the same programmatic scale over that period. During each phase, Heart to Heart will work alongside local partners to evaluate program effectiveness.



Medical Support

Heart to Heart will treat water-related diseases, such as diarrheal diseases, anemia and dehydration, among students, teachers and community members, as needed. We also plan to create a community health center that reinforces and supports our public health initiatives over a three-year span.

Technical Assistance

In addition to gaining national, regional and local support for the water-improvement program, Heart to Heart will establish health committees at each school to help oversee program implementation and monitor its effectiveness. We will support these committees with appropriate training, planning and educational materials. Heart to Heart will also establish a water committee in each community to support sustainable water sources and sanitation improvements.

Community Health Education

Along with providing safe water, Heart to Heart and local partners will also promote hygiene education and sanitation awareness first in the schools, then in the homes of students, and finally in the surrounding communities to enhance program effectiveness.

You can ensure that water is life for people in Guatemala by supporting our initiatives. Call us today to find out how at 913-764-5200.

Heart to Heart
INTERNATIONAL

401 S. Clairborne, Suite 302, Olathe, KS 66062
Phone 913-764-5200
Email info@hearttoheart.org
Web www.hearttoheart.org